

DGS-200 Gradient HPLC with Variable Wavelength Detector

No Frills HPLC at an affordable price !!



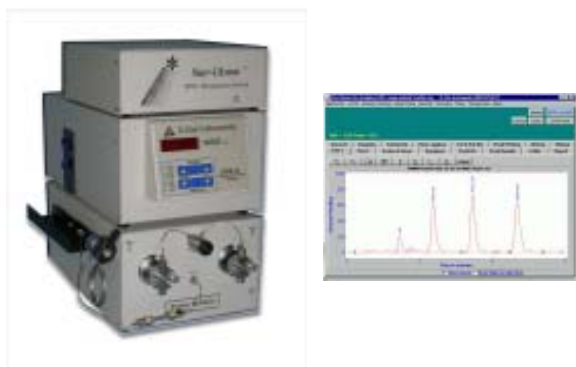
D-STAR INSTRUMENTS presents its new line of high performance, binary gradient liquid chromatography systems. The new stacking configuration minimizes bench-top space. It includes a variable wavelength UV-VIS detector, pumps and injection valve.

The DGS-200 offers the best price/performance in the market. And in today's economy, isn't that what is important. You need performance that meets your requirements at a price that meets your budget.

Why waste money on performance specifications and features that you will never use ?

Important DGS-200 Features

- UV-VIS operation from 195nm to 800nm (with optional tungsten lamp).
- Double beam optics (Reference and Sample Paths).
- Flowcells are also available for prep and microbore in PEEK or Stainless Steel construction.
- Sensitivity levels available for over 95% of all applications.
- All wettable components are constructed of Stainless Steel, TFE, Tefzel, and Quartz. Optional PEEK flow path for bio-compatibility is available with no difference in price.
- Flow rate from 0.01 to 9.99mL/min. 3,500psi (5,000 psi pressures available).
- Through-the-handle low dead volume injection valve.
- Analog outputs for absorbance and wavelength available at rear of instrument.
- Contact closure output for data acquisition start.
- Software control of gradient.
- Software display and integration of data.



DGS-200 with software

The **DGS-200** is packaged with our Star-Chrom software. This easy to use package includes dual channel data acquisition / data integration and instrument control. Including pump control with pressure transducer and wavelength control of the detector.



D-Star Instruments, Inc. • 8424 Quarry Rd., Manassas, VA 20110
Phone: 703-335-0770 • Fax: 703-335-9952 • WWW.D-STAR.COM

DGS-200 Specifications

Detector Specifications:

Wavelengths: 195 to 800 nm
Lamps: Standard - Deuterium (D2) (195-360 nm)
Accessory - Tungsten (W) (360-800 nm)

Flowcells:
Analytical: 7mm pathlength, 10ml volume, 200 psi; wetted materials:
PEEK, quartz or sapphire, Tefzel, TFE; 1/16" O.D. tubing.
Preparative: 2.0 mm pathlength, 4 ml volume, 100 psi; wetted materials:
PEEK, quartz or sapphire, Tefzel, TFE, 1/8" O.D. tubing.

Linearity: Better than 2%
Wavelength Accuracy: 2 nm
Wavelength Reproducibility: 1 nm
Spectral Resolution: 5 nm
Stability (Drift): Less than 2.5×10^{-4} AU/Hr (at 254 nm and constant temperature)
Noise: Less than $\pm 2.5 \times 10^{-5}$ AU (5×10^{-5} AU peak to peak) at 254nm and constant temperature
Recorder Output (A): 10mV
Integrator Output: 1.0 V/AU to 2V (Equivalent to 2.0 AU)
Display: Absorbance: 4.5 digits to 1.999 AU
Wavelength: 3 digits for operating range 195-800 nm
Absorbance Ranges: 0.005, 0.01, 0.02, 0.05, 0.10, 0.20, 0.50, 1.0 AU
Front Panel Controls: Wavelength (l) selection, Range selection, Autozero, Event Mark
Rear Panel Controls: Subminiature D-type, 15 position female connector for detector recorder/ integrator output, and remote control (Wavelength Up/Down, Event Mark, Autozero, Lamp On/Off, Sample/Reference Energy)

Pump Specifications:

Flow Rate: 0.01 to 9.99 mL/min
Pressure: 0-3500 PSI for 10 mL head (SS or PEEK) [**Option "P" version:** 0-5000 PSI(SS) / 3500 psi (PEEK)]
Flow Accuracy: 3% for flowrates of 0.33 mL/min and above; 0.01 mL/min for flowrates below 0.33 mL/min
Seal Flush: Continuous flush of piston seal to minimize buffer problems
Precision: 0.5% RSD
Controls: Software control of gradient pumps. Ten gradient segments. Pressure display including continuous pressure plot. High and low pressure alarms.
Rear Panel: 6 pin RJ-11: RS-232 for remote pump control, DB-15F for Detector control cable
Power entry module: 110/115, 220/230V factory preset
Integrated Prime/Purge Valve: PEEK with 0.0625" port diameter and fittings; 5000 PSI; wetted materials: Stainless Steel or PEEK, TFE™ and Tefzel
Pulse Damper: Mobile phase in contact with damper: 1.2 mL at 6000 PSI; wetted materials: Stainless Steel or PEEK and inert diaphragm; compressible fluid: isopropanol
Pressure Transducer: Rated to at least 10,000 psi (included with "Plus" and DIS versions)
Injection Valve: Stainless Steel or PEEK ; 20 uL sample loop; position sensor (event); Through-the-Handle Sample Injection Port; user changeable sample loops

Models Available:
DGS-200, DGS-200P



D-Star Instruments, Inc. • 8424 Quarry Rd., Manassas, VA 20110
Phone: 703-335-0770 • Fax: 703-335-9952 • WWW.D-STAR.COM